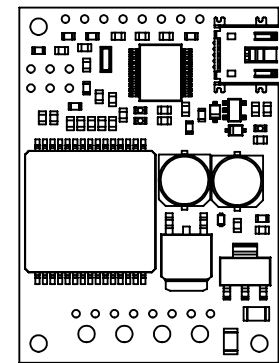


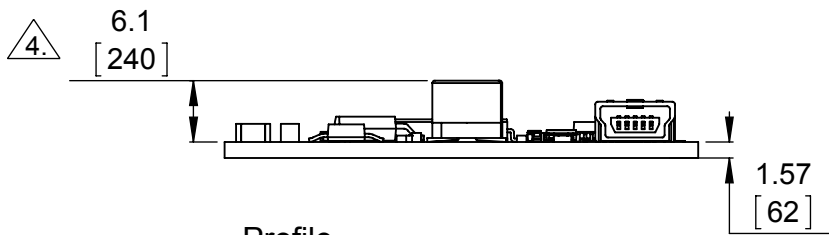
3 Isometric view Scale 4:3



5 Actual size Scale 1:1

1 Board dimensions (top view) Scale 4:3


2 Connector callouts (bottom view) Scale 4:3



4 Profile Scale 4:3

- To get the specified scale, select 100% in print settings.
- Drill location tolerance:  $\pm 0.1$  [ $\pm 5$ ].
- Board edge tolerance:  $\pm 0.3$  [ $\pm 10$ ].

4. Height of capacitor above the board is 7.8 [307] for boards manufactured prior to December 2014.

<a href="https://www.pololu.com/product/1393">https://www.pololu.com/product/1393</a>	
Name: Pololu Jrk 12v12 USB Motor Controller with Feedback	Item numbers: 1393
Drawing date: 24 December 2015	
Units: mm [mil]	PCB dev code: umc02a
 © 2015 Pololu Corporation	