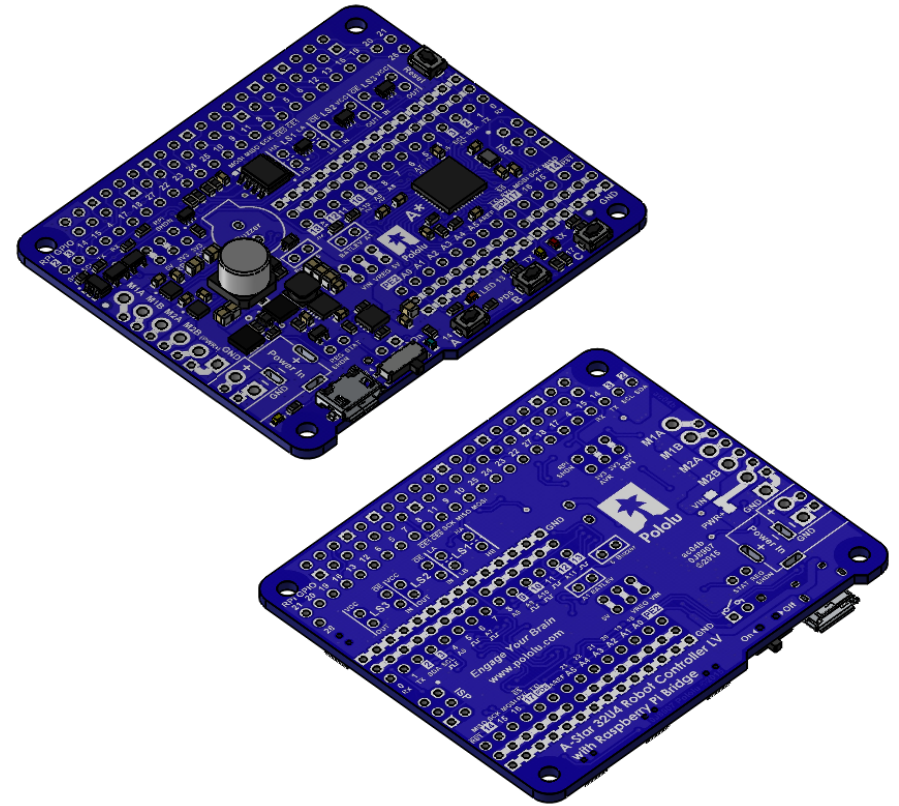
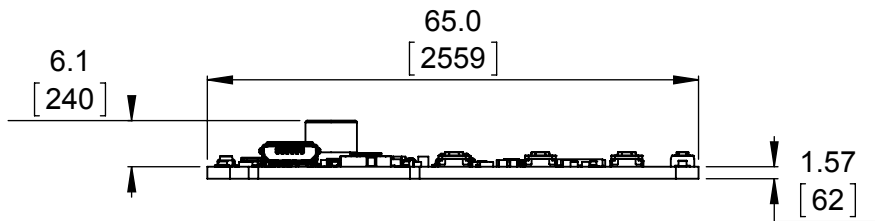


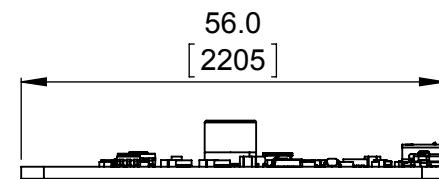
① Top view (actual size)
Scale 1:1



② Isometric view
Scale 1:1



③ Long profile
Scale 1:1



④ Short profile
Scale 1:1

1. To get the specified scale, select 100% in print settings.
2. Drill location tolerance: ± 0.1 [± 5].
3. Board edge tolerance: ± 0.3 [± 10].

<https://www.pololu.com/product/3116>

Name:
A-Star 32U4 Robot Controller LV with
Raspberry Pi Bridge (SMT components only)

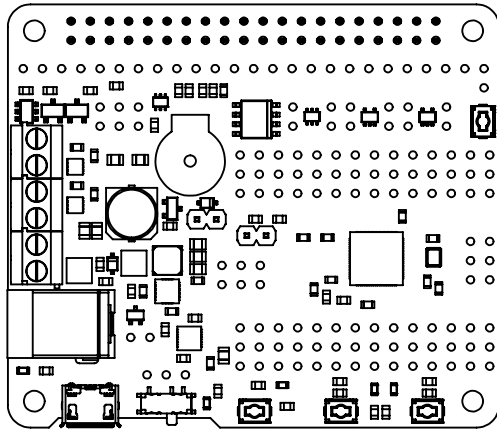
Item number:
3116

Drawing date:
3 March 2016

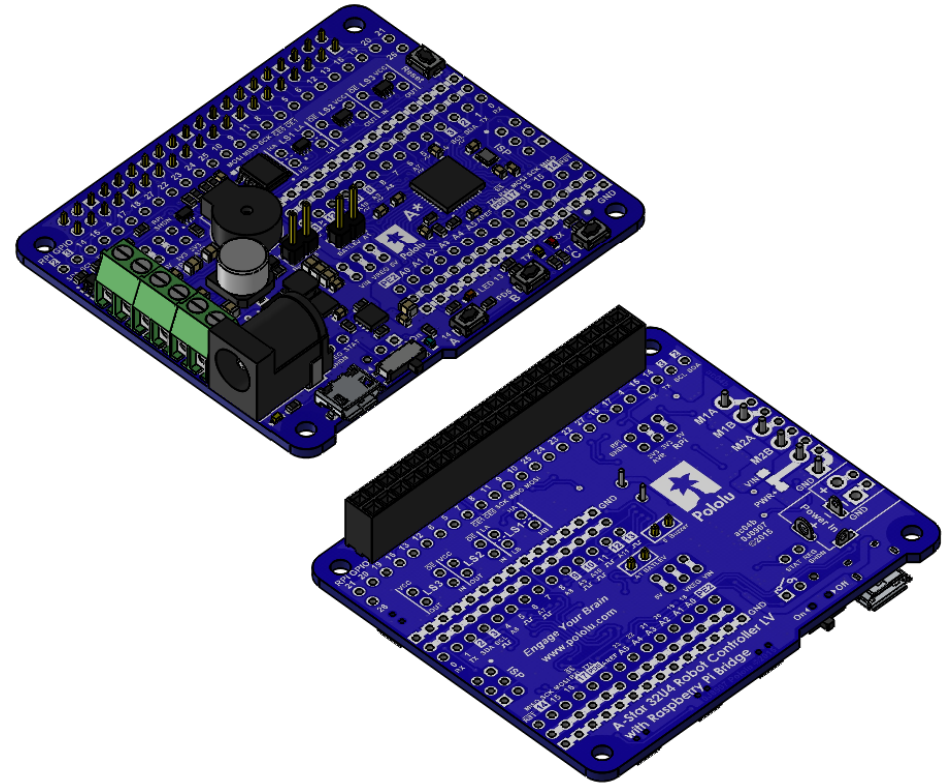
Units: mm
[mil]

PCB dev code:
ac04b

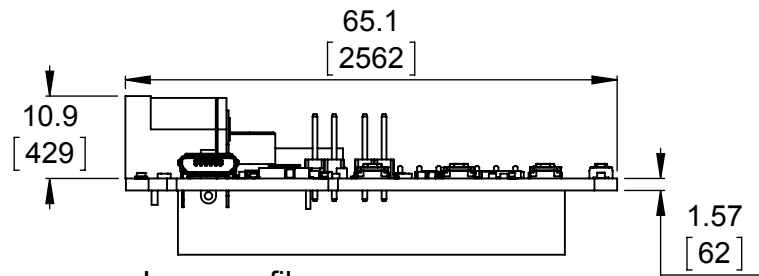

© 2016 Pololu Corporation



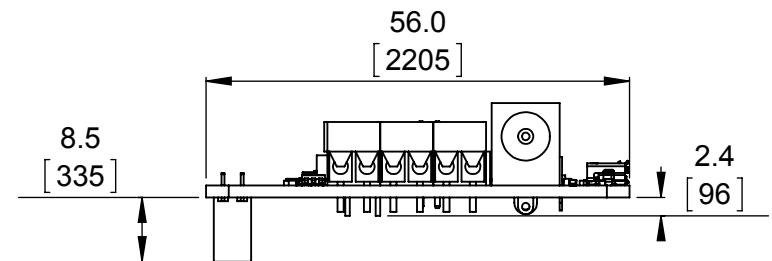
① Top view (actual size)
Scale 1:1



② Isometric view
Scale 1:1



③ Long profile
Scale 1:1



④ Short profile
Scale 1:1

1. To get the specified scale, select 100% in print settings.
2. Drill location tolerance: ± 0.1 [± 5].
3. Board edge tolerance: ± 0.3 [± 10].

<https://www.pololu.com/product/3117>

Name:
A-Star 32U4 Robot Controller LV with
Raspberry Pi Bridge (assembled)

Item number:
3117

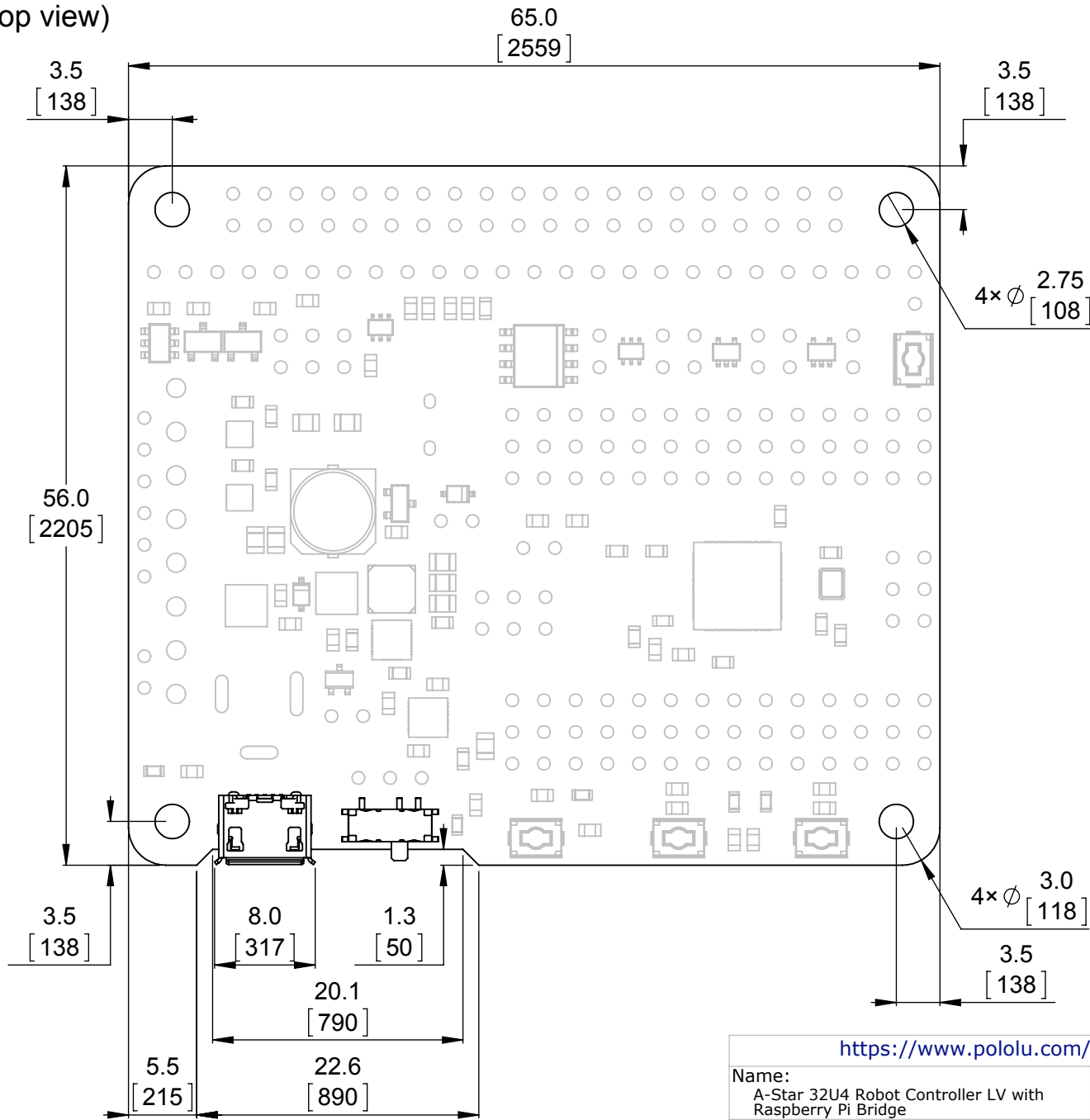
Drawing date:
3 March 2016

Units: mm
[mil]

PCB dev code:
ac04b


© 2016 Pololu Corporation


Board dimensions (top view)



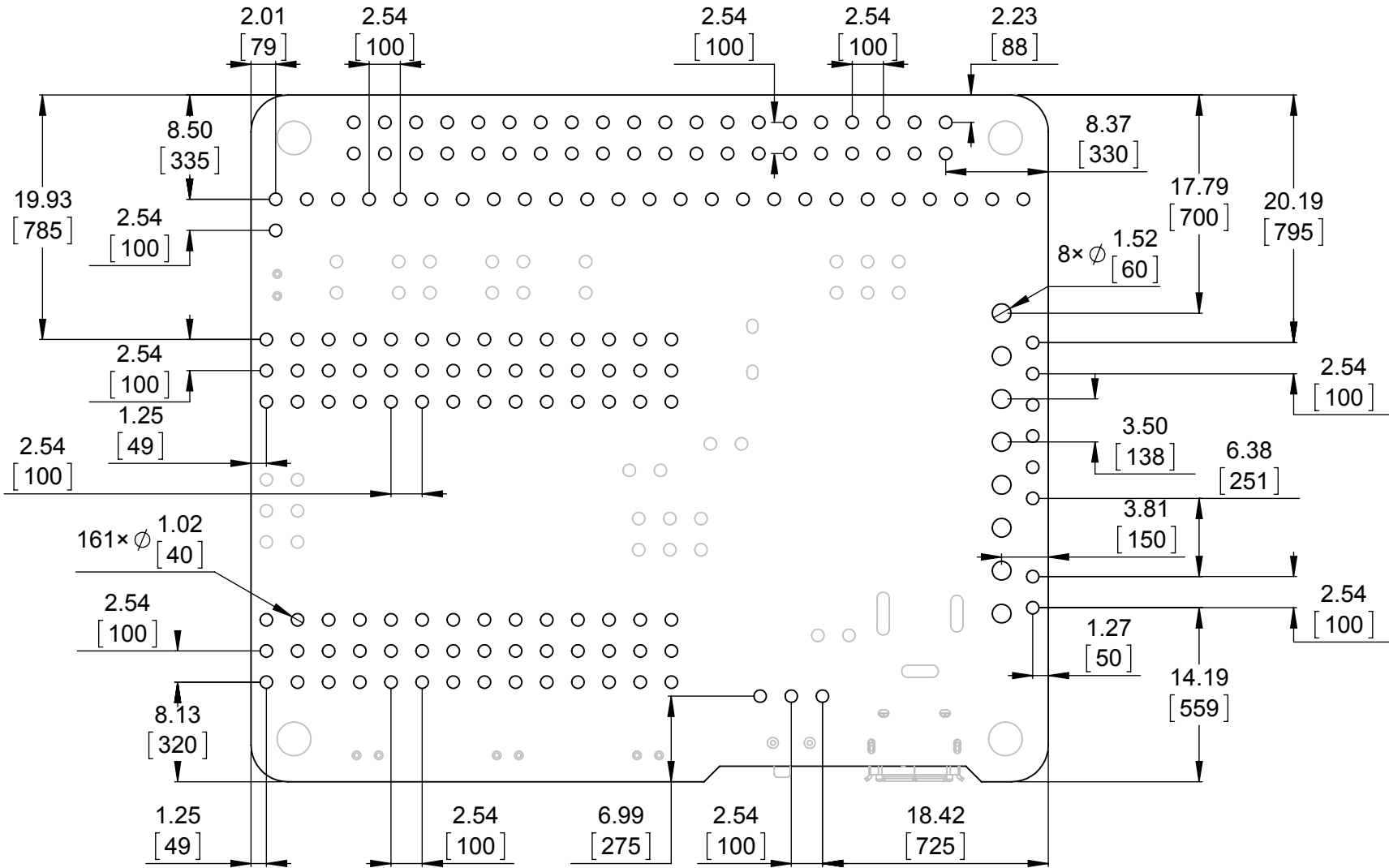
1. To get the specified scale, select 100% in print settings.
2. Drill location tolerance: ± 0.1 [± 5].
3. Board edge tolerance: ± 0.3 [± 10].

Scale: 2:1

<https://www.pololu.com/product/3116>

Name: A-Star 32U4 Robot Controller LV with Raspberry Pi Bridge		Item number: 3116, 3117
Drawing date: 3 March 2016		
Units: mm [mil]	PCB dev code: ac04b	
 © 2016 Pololu Corporation		


Connector callouts 1 (bottom view)



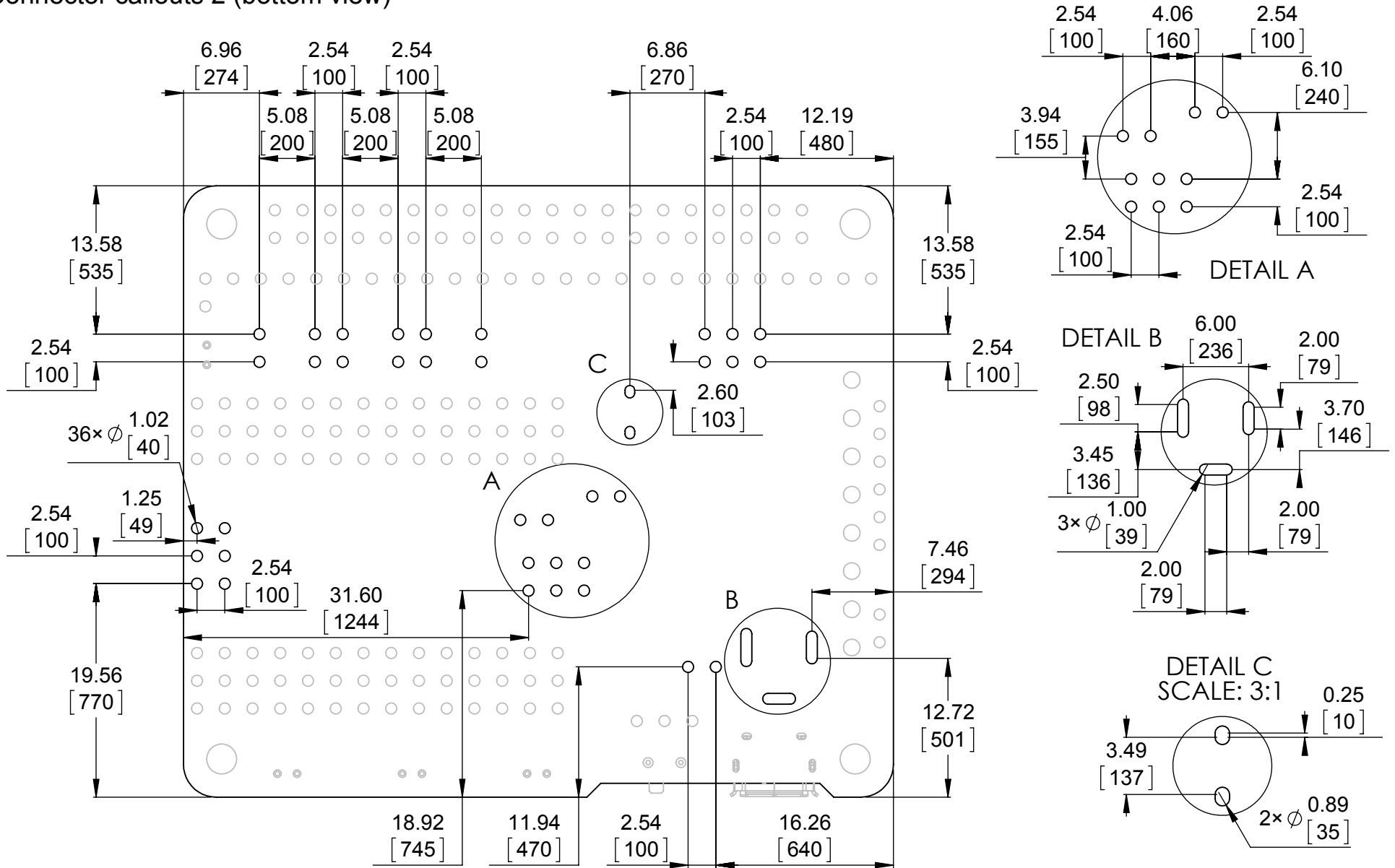
- To get the specified scale, select 100% in print settings.
- Drill location tolerance: ± 0.1 [± 5].
- Board edge tolerance: ± 0.3 [± 10].

Scale: 2:1

<https://www.pololu.com/product/3116>

Name: A-Star 32U4 Robot Controller LV with Raspberry Pi Bridge		Item numbers: 3116, 3117
Drawing date: 3 March 2016		 Pololu Robotics & Electronics © 2016 Pololu Corporation
Units: mm [mil]	PCB dev code: ac04b	

Connector callouts 2 (bottom view)



1. To get the specified scale, select 100% in print settings.
2. Drill location tolerance: ± 0.1 [± 5].
3. Board edge tolerance: ± 0.3 [± 10].

Scale: 2:1

<https://www.pololu.com/product/3116>

Name:
A-Star 32U4 Robot Controller LV with
Raspberry Pi Bridge

Item numbers:
3116, 3117

Drawing date:
3 March 2016

Units: mm
[mil]

PCB dev code:
ac04b

Pololu
Robotics & Electronics
© 2016 Pololu Corporation