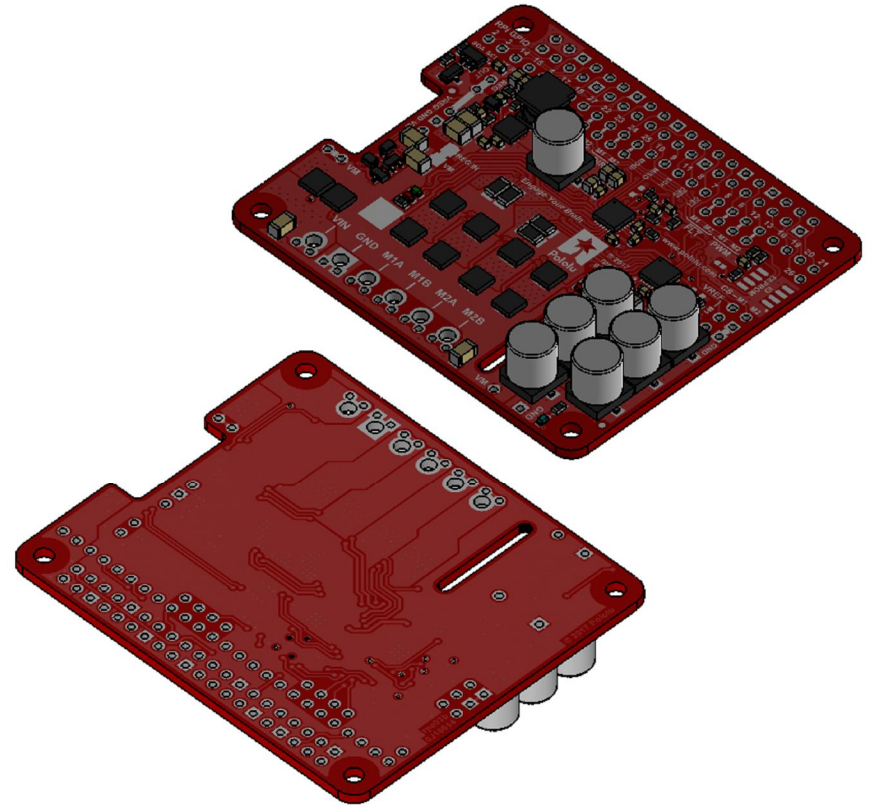
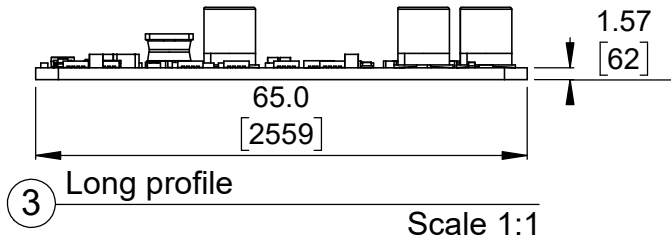
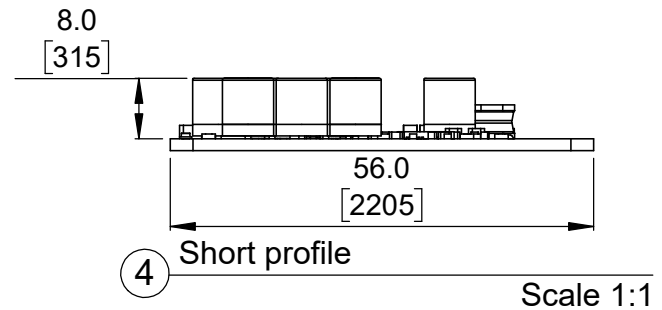


① Top view (actual size)
Scale 1:1




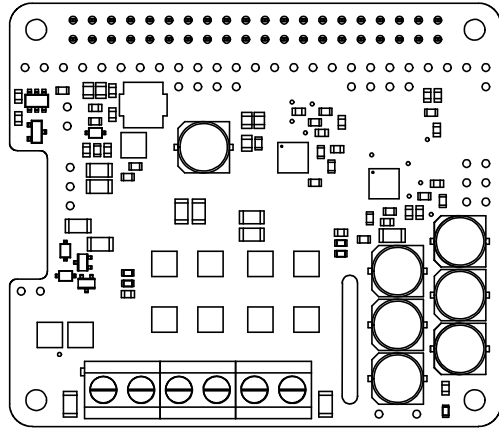
② Isometric view
Scale 4:5



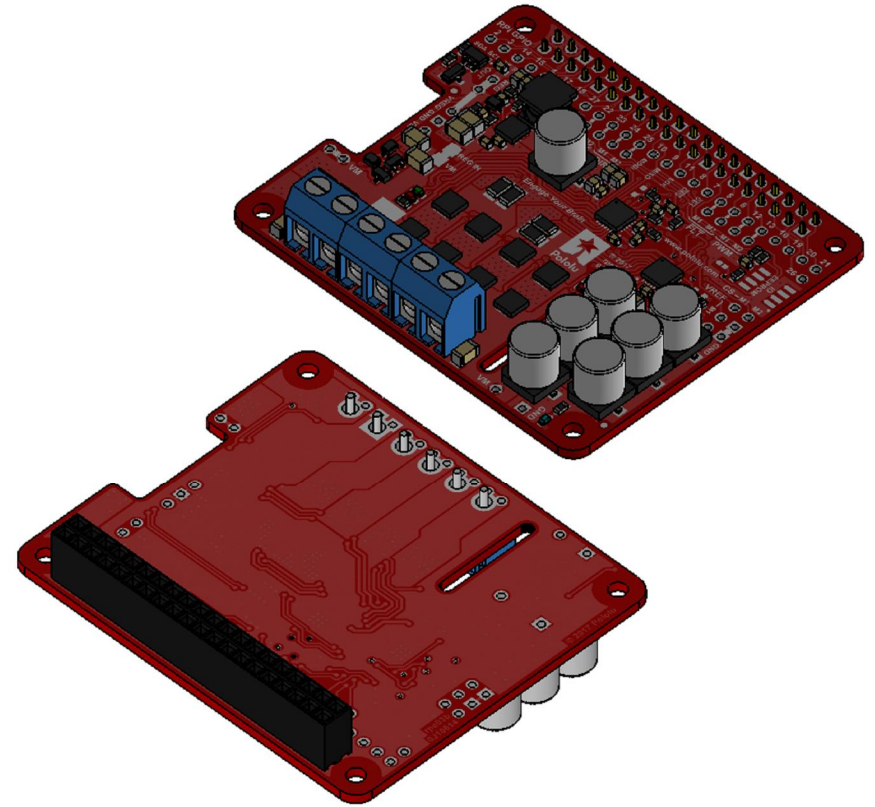
1. To get the specified scale, select 100% in print settings.
2. Drill location tolerance: ± 0.1 [± 5].
3. Board edge tolerance: ± 0.3 [± 10].

<https://www.pololu.com/product/3750>

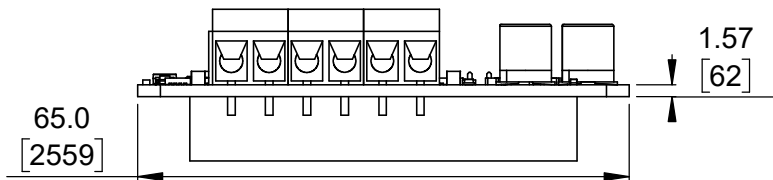
Name: Pololu Dual G2 High-Power Motor Driver for Raspberry Pi (Partial Kit)		Item number: 3750, 3752
Drawing date: 17 November 2017	Dev code: rpe03b	 Pololu Robotics & Electronics © 2017 Pololu Corporation
Units: mm [mil]	Material: mixed	



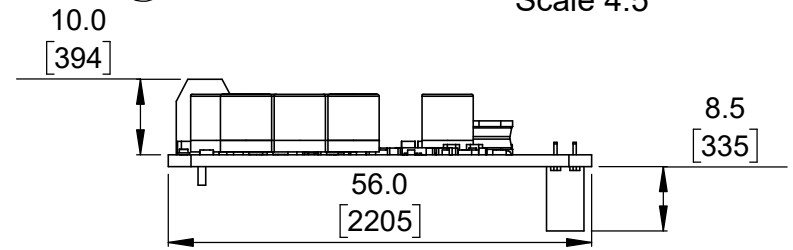
① Top view (actual size)
Scale 1:1



② Isometric view
Scale 4:5



③ Long profile
Scale 1:1



④ Short profile
Scale 1:1

1. To get the specified scale, select 100% in print settings.
2. Drill location tolerance: ± 0.1 [± 5].
3. Board edge tolerance: ± 0.3 [± 10].

<https://www.pololu.com/product/3751>

Name:
Pololu Dual G2 High-Power Motor
Driver for Raspberry Pi (Assembled)

Item number:
3751, 3753

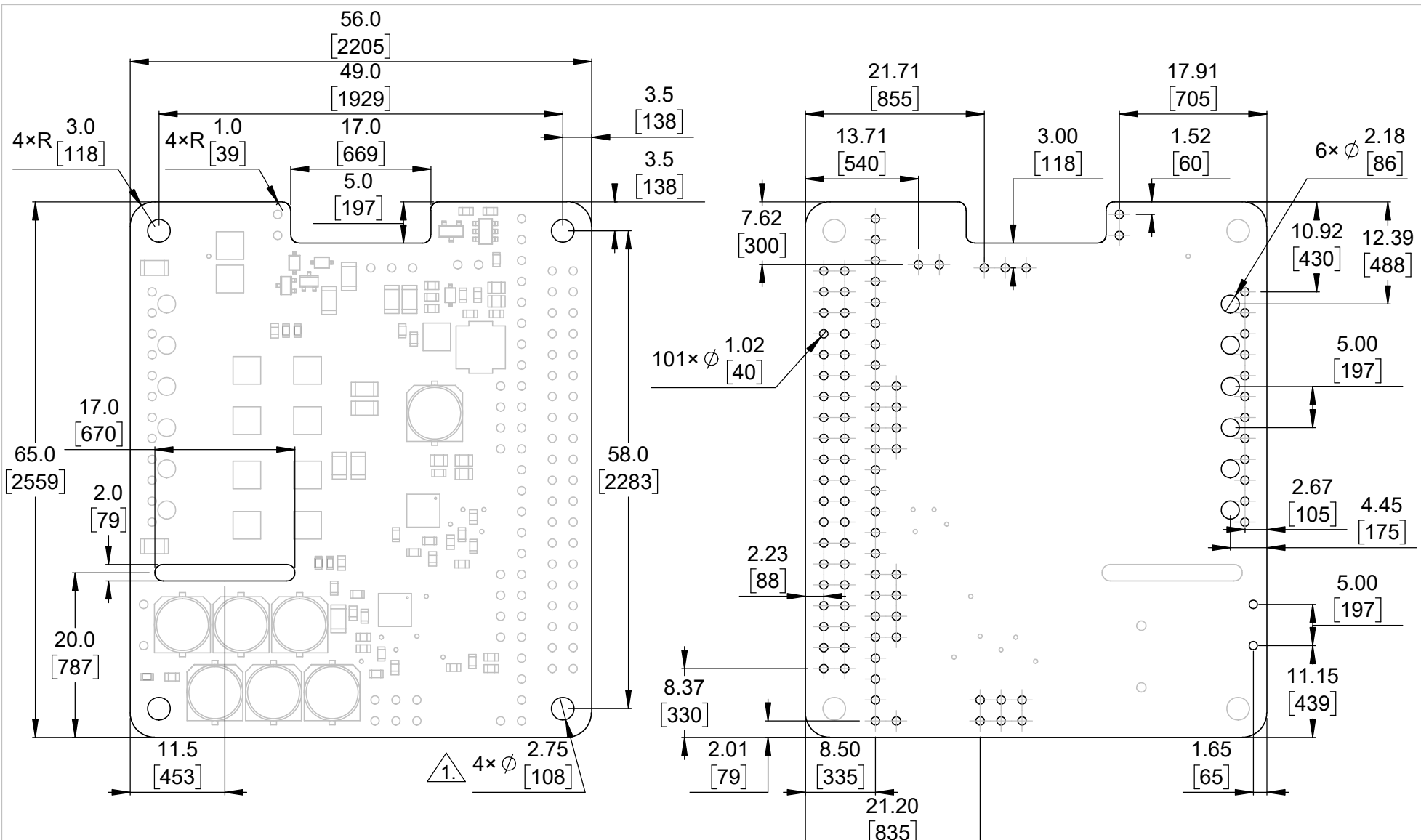
Drawing date:
17 November 2017

Dev code:
rpe03b

Units: mm
[mil]

Material:
mixed


Robotics & Electronics
© 2017 Pololu Corporation



1 Board dimensions (top view)
Scale 3:2

2 Connector callouts (bottom view)
Scale 3:2

1. Intended for M2.5 screws.
2. Grid lines indicate 2.54mm [100 mil] spacing.
3. To get the specified scale, select 100% in print settings.
4. Drill location tolerance: ± 0.1 [± 5].
5. Board edge tolerance: ± 0.3 [± 10].

https://www.pololu.com/product/3750	
Name: Pololu Dual G2 High-Power Motor Driver for Raspberry Pi	Item number: 3750-3753
Drawing date: 17 November 2017	Dev code: rpe03b
Units: mm [mil]	Material: mixed

