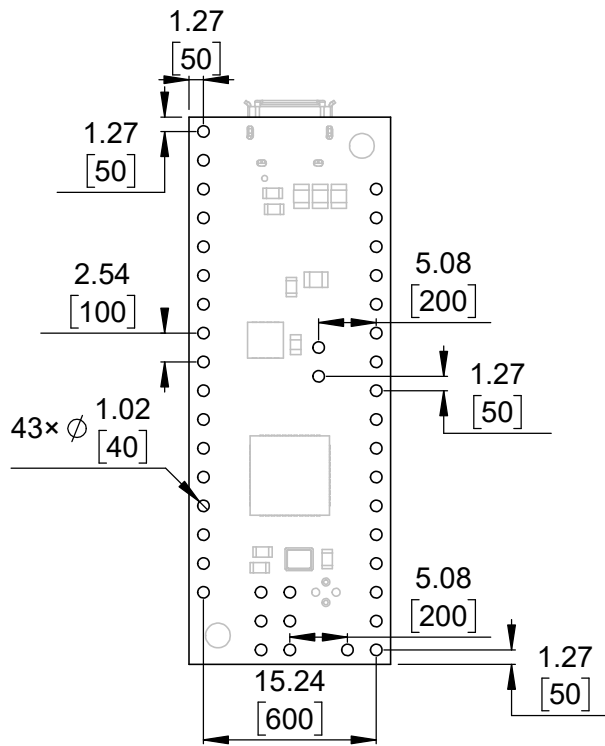
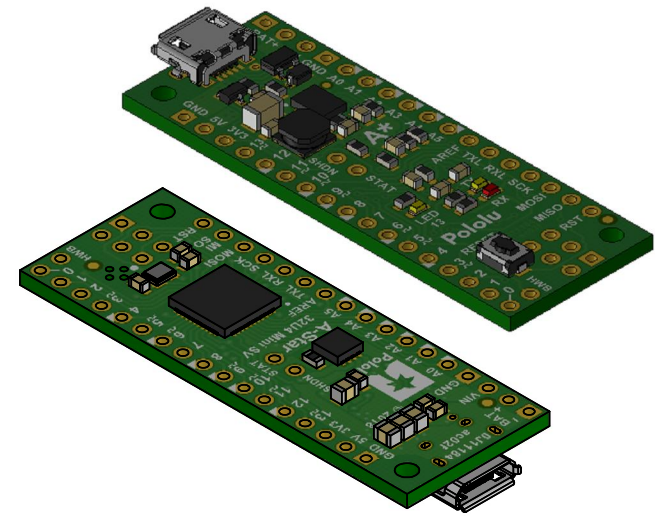


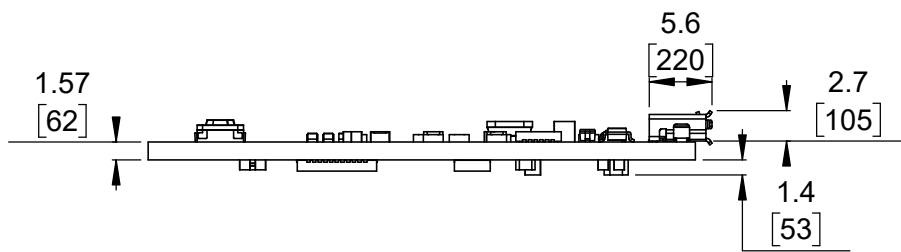
① Board dimensions (top view)
Scale 3:2



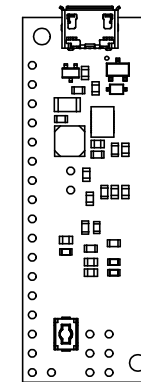
② Connector callouts (bottom view)
Scale 3:2



③ Isometric view
Scale 3:2




④ Profile
Scale 3:2



⑤ Actual size
Scale 1:1

- ①. Intended for #2 screws.
- ②. To get the specified scale, select 100% in print settings.
- ③. Drill location tolerance: ± 0.1 [± 5].
- ④. Board edge tolerance: ± 0.3 [± 10].

<https://www.pololu.com/product/3145>

Name: A-Star 32U4 Mini SV		Item number: 3145
Drawing date: 10 May 2018	Dev code: ac02f	 © 2018 Pololu Corporation
Units: mm [mil]	Material: mixed	