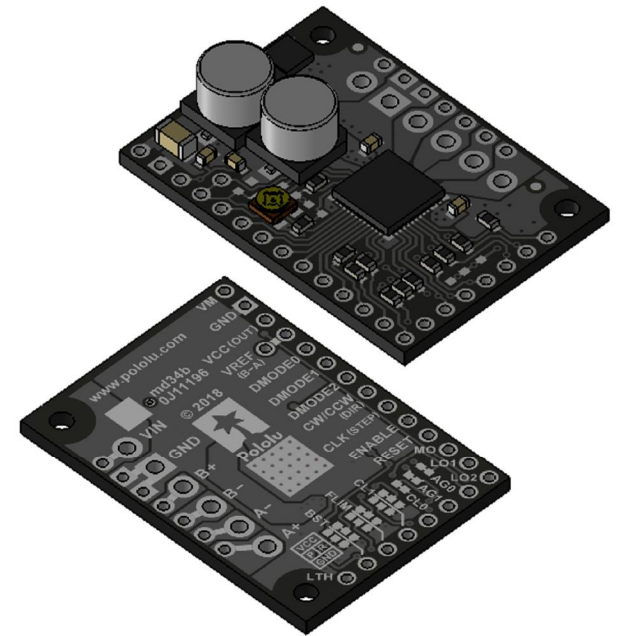
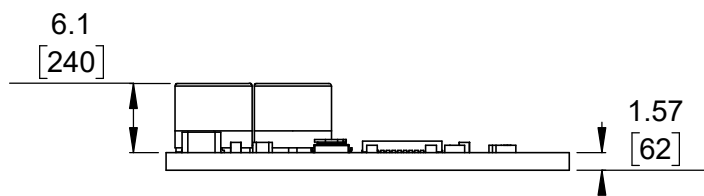


① Board dimensions (top view)  
Scale 3:2

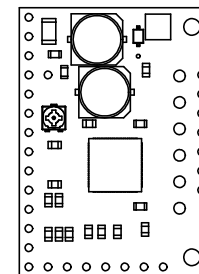
② Connector callouts (bottom view)  
Scale 3:2



③ Isometric view  
Scale 3:2




④ Profile  
Scale 3:2



⑤ Actual size  
Scale 1:1

- ①. Intended for #2 screws.
- ②. To get the specified scale, select 100% in print settings.
- ③. Drill location tolerance:  $\pm 0.1$  [ $\pm 5$ ].
- ④. Board edge tolerance:  $\pm 0.3$  [ $\pm 10$ ].

<https://www.pololu.com/product/2973>

Name: TB67S2x9FTG Stepper Motor Driver Carrier		Item number: 2973, 2974
Drawing date: 31 May 2018	Dev code: md34b	 © 2018 Pololu Corporation
Units: mm [mil]	Material: mixed	