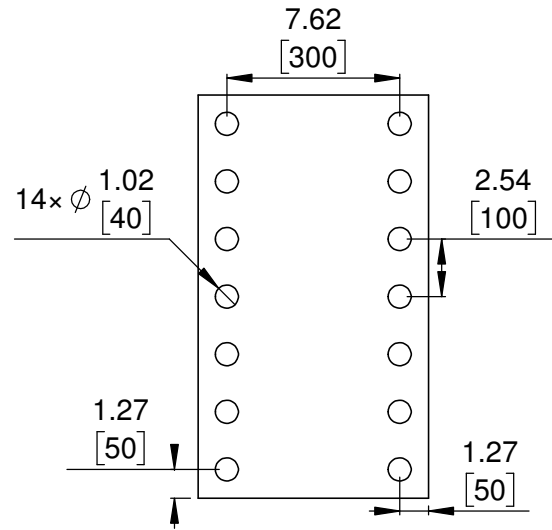
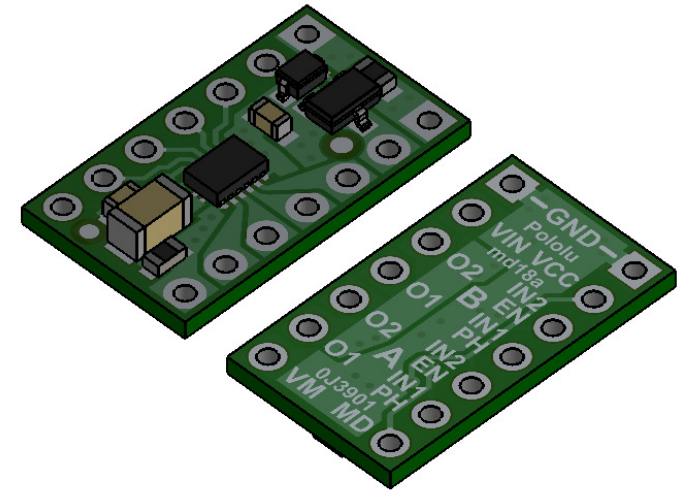


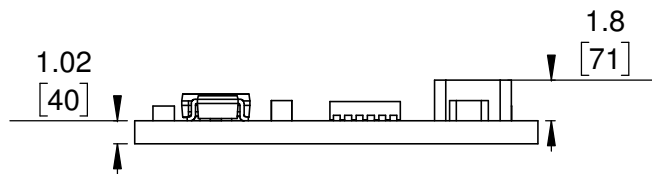
① Board dimensions (top view)  
Scale 3:1



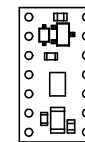
② Connector callouts (bottom view)  
Scale 3:1



③ Isometric view  
Scale 3:1



④ Profile  
Scale 3:1



⑤ Actual size  
Scale 1:1

1. To get the specified scale, select 100% in print settings.
2. Drill location tolerance:  $\pm 0.1$  [ $\pm 5$ ].
3. Board edge tolerance:  $\pm 0.3$  [ $\pm 10$ ].

<https://www.pololu.com/product/2135>

|  |  |                      |  |
|--|--|----------------------|--|
| Name:<br>DRV8835 Dual Motor Driver Carrier |  | Item number:<br>2135 |  |
| Drawing date:<br>06 July 2018              |  | Dev code:<br>md18a   |  |
| Units: mm [mil]                            |  | Material:<br>mixed   |  |

