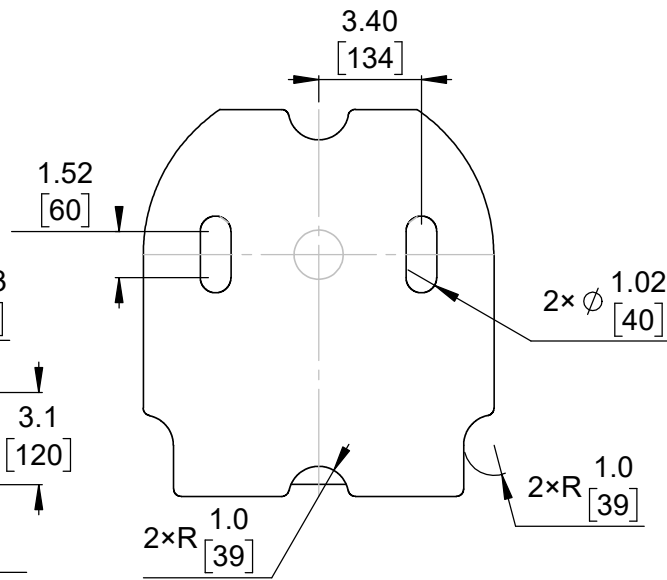
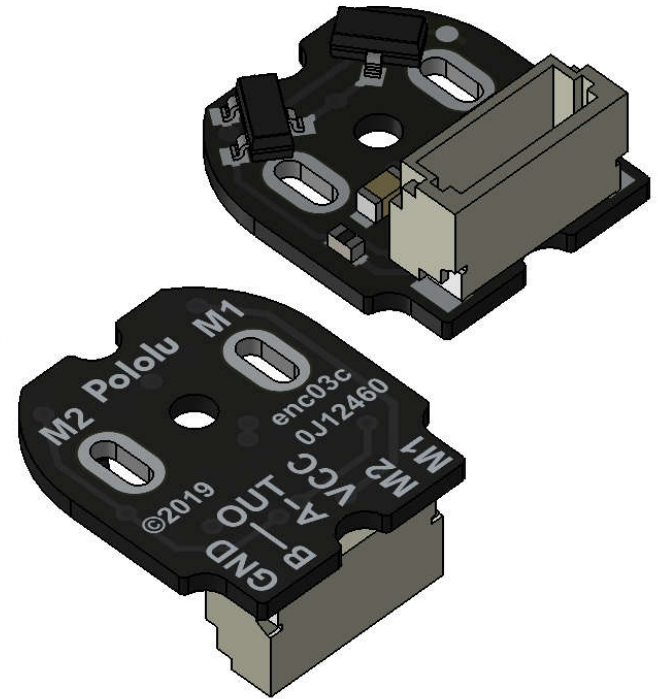


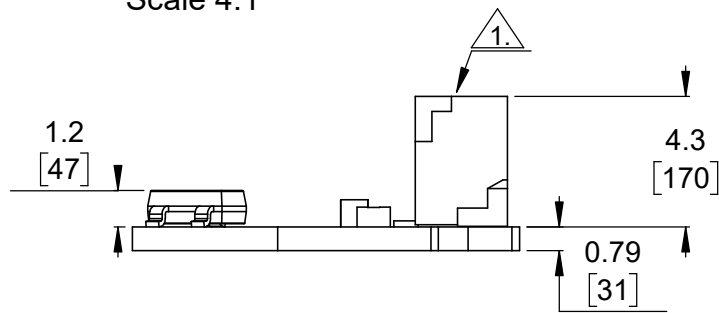
① Board dimensions (top view)  
Scale 4:1



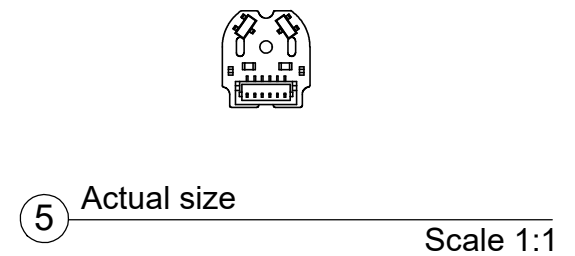
② Connector callouts (bottom view)  
Scale 4:1



③ Isometric view  
Scale 4:1




④ Profile  
Scale 4:1

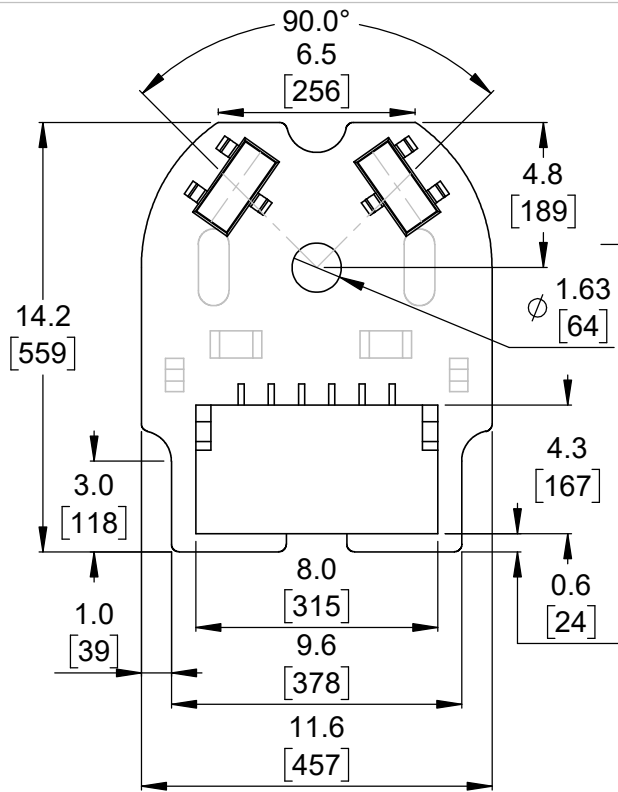


⑤ Actual size  
Scale 1:1

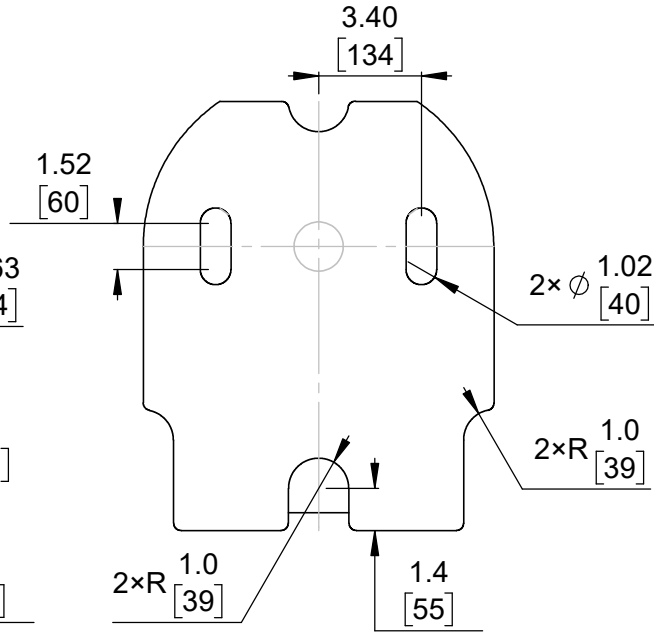
- ①. Top-entry, 6-pin male JST SH-type connector.
- ②. To get the specified scale, select 100% in print settings.
- ③. Drill location tolerance:  $\pm 0.1$  [ $\pm 5$ ].
- ④. Board edge tolerance:  $\pm 0.3$  [ $\pm 10$ ].

<https://www.pololu.com/product/4760>

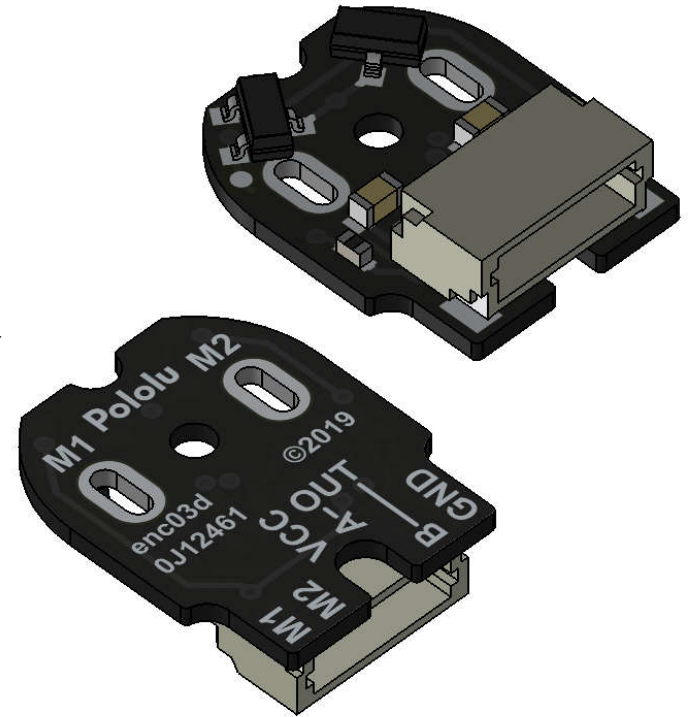
Name: Magnetic Encoder Pair Kit with Top-Entry Connector for Micro Metal Gearmotors, 12 CPR, 2.7-18V		Item number: 4760
Drawing date: 24 October 2019	Dev code: enc03c	 © 2019 Pololu Corporation
Units: mm [mil]	Material: mixed	



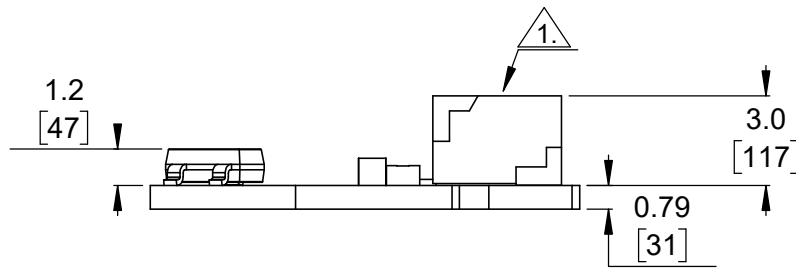
① Board dimensions (top view)  
Scale 4:1



② Connector callouts (bottom view)  
Scale 4:1



③ Isometric view  
Scale 4:1




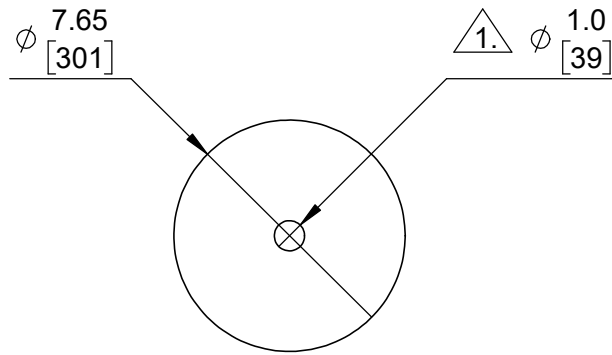
④ Profile  
Scale 4:1

⑤ Actual size  
Scale 1:1

- ①. Side-entry, 6-pin male JST SH-type connector.
- ②. To get the specified scale, select 100% in print settings.
- ③. Drill location tolerance:  $\pm 0.1$  [ $\pm 5$ ].
- ④. Board edge tolerance:  $\pm 0.3$  [ $\pm 10$ ].

<https://www.pololu.com/product/4761>

Name: Magnetic Encoder Pair Kit with Side-Entry Connector for Micro Metal Gearmotors, 12 CPR, 2.7-18V		Item number: 4761
Drawing date: 24 October 2019	Dev code: enc03d	 © 2019 Pololu Corporation
Units: mm [mil]	Material: mixed	



① Top view  
Scale 4:1



② Isometric view  
Scale 4:1



③ Profile  
Scale 4:1




④ Actual size  
Scale 1:1



① Designed to fit extended motor shaft on Pololu Micro Metal Gearmotors.  
② To get the specified scale, select 100% in print settings.

<https://www.pololu.com/product/2599>

Name: Magnetic Encoder Disc for Micro Metal Gearmotors, OD 7.65 mm, ID 1.0 mm, 12 CPR		Item number: 2599
Drawing date: 24 October 2019	Dev code: w1r02a	 © 2019 Pololu Corporation
Units: mm [mil]	Material: mixed	