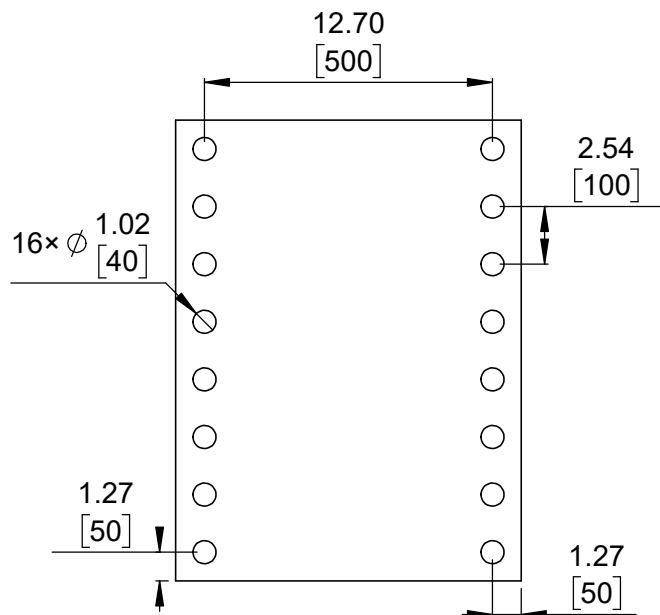
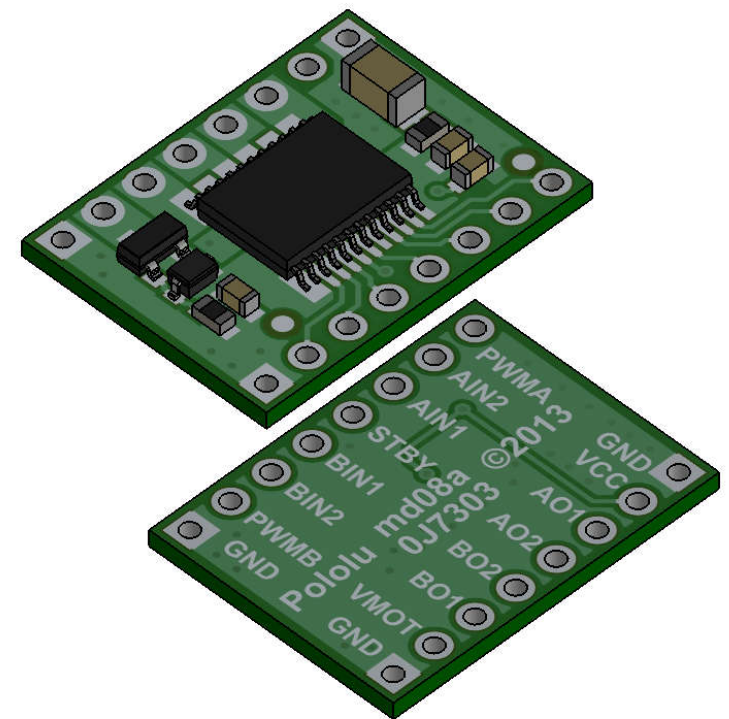


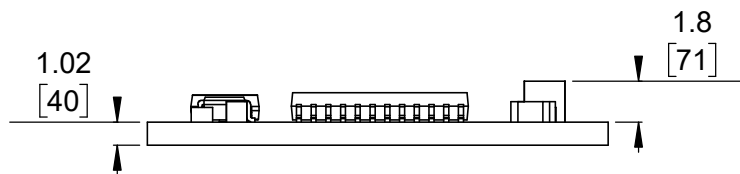
1 Board dimensions (top view)
Scale 3:1



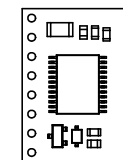
2 Connector callouts (bottom view)
Scale 3:1



3 Isometric view
Scale 3:1




4 Profile
Scale 3:1



5 Actual size
Scale 1:1

1. To get the specified scale, select 100% in print settings.
2. Drill location tolerance: ± 0.1 [± 5].
3. Board edge tolerance: ± 0.3 [± 10].

<https://www.pololu.com/product/713>

Name: TB6612FNG Dual Motor Driver Carrier		Item number: 713
Drawing date: 26 October 2018	Dev code: md08a	 © 2018 Pololu Corporation
Units: mm [mil]	Material: mixed	