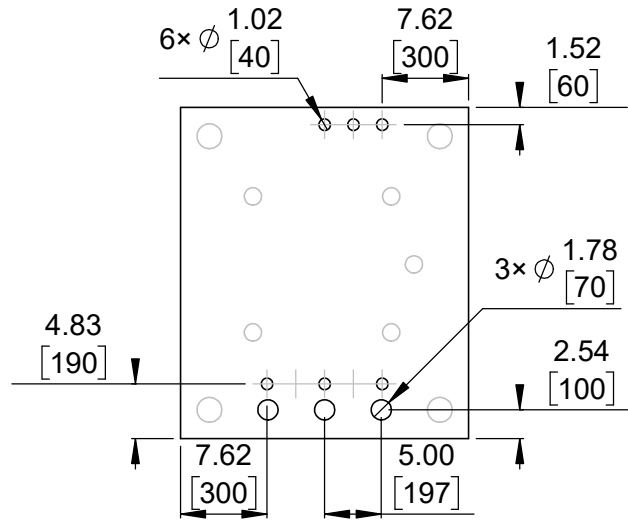
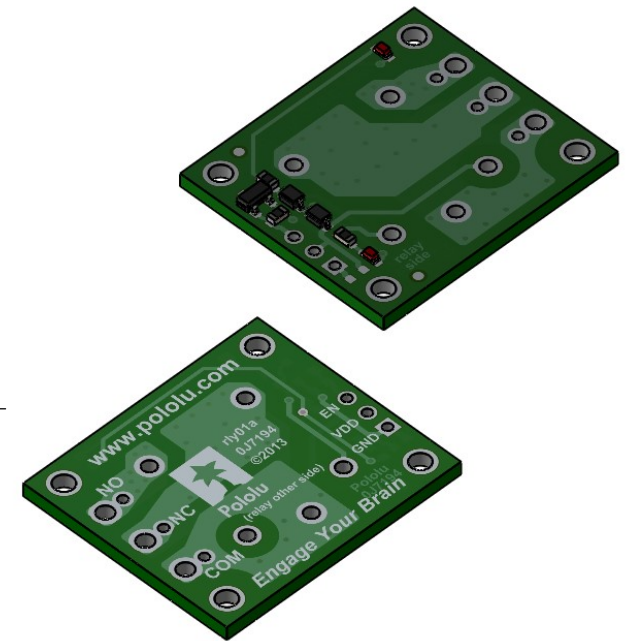


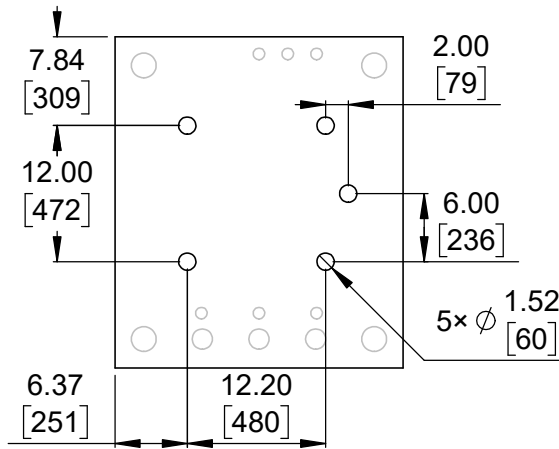
① Board dimensions (top view)  
Scale 3:2



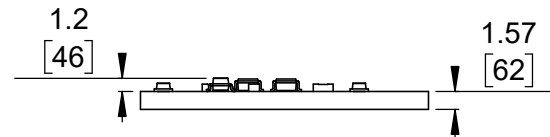
② Connector callouts (bottom view)  
Scale 3:2



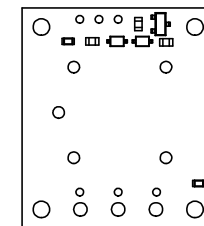
③ Isometric view  
Scale 3:2



④ Relay connector callouts (bottom view)  
Scale 3:2




⑤ Short profile  
Scale 3:2

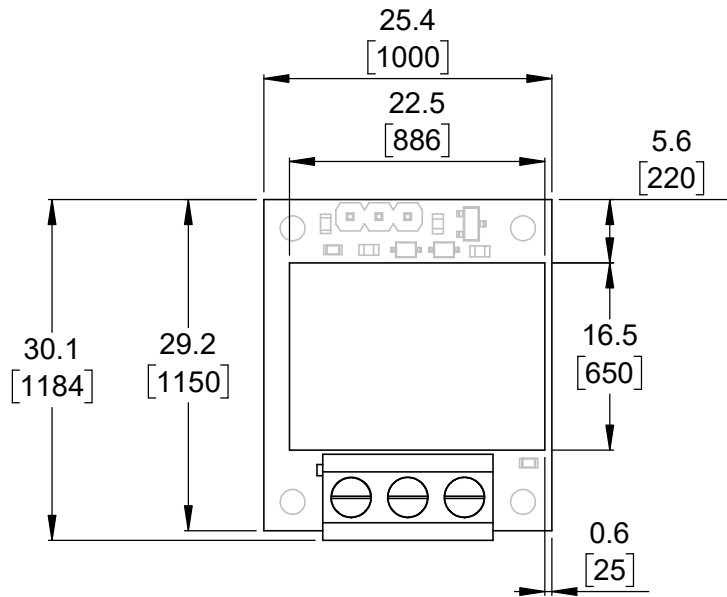


⑥ Actual size  
Scale 1:1

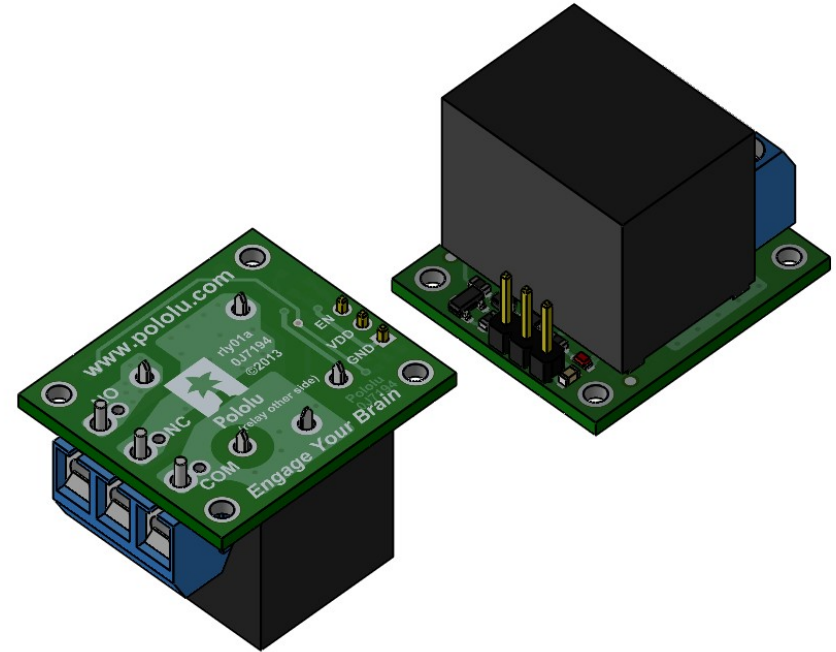
- 1. Intended for #2 or M2 screws.
- 2. Grid lines indicate 2.54 mm [100 mil] spacing.
- 3. To get the specified scale, select 100% in print settings.
- 4. Drill location tolerance:  $\pm 0.1$  [ $\pm 5$ ].
- 5. Board edge tolerance:  $\pm 0.3$  [ $\pm 10$ ].

<https://www.pololu.com/product/2479>

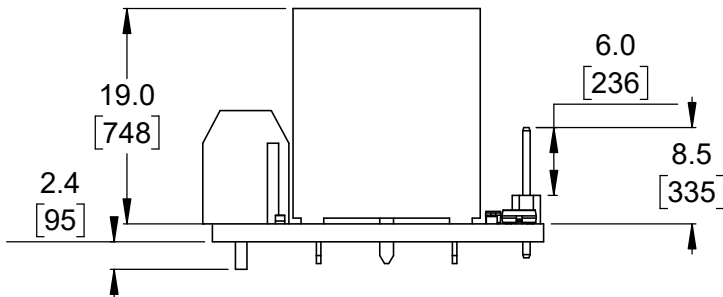
|  |                     |  |
|--|---------------------|--|
| Name:<br>Pololu Basic SPDT Relay Carrier for "Sugar Cube" Relays |                     | Item number:<br>2479-2483  |
| Drawing date:<br>24 May 2022                                     | Dev code:<br>rly01a | <br>© 2022 Pololu Corporation |
| Units: mm [mil]  | Material:<br>mixed  |  |



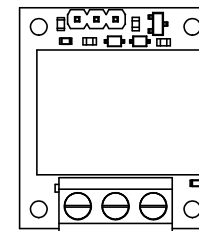
1 Board dimensions (top view)  
(with included through-hole components)  
Scale 3:2



2 Isometric view  
(with included through-hole components)  
Scale 3:2




3 Long profile  
(with included through-hole components)  
Scale 3:2



4 Top view (actual size)  
(with included through-hole components)  
Scale 1:1

1. To get the specified scale, select 100% in print settings.
2. Drill location tolerance:  $\pm 0.1$  [ $\pm 5$ ].
3. Board edge tolerance:  $\pm 0.3$  [ $\pm 10$ ].

<https://www.pololu.com/product/2480>

|   |                     |  |
|---|---------------------|--|
| Name:<br>Pololu Basic SPDT Relay Carrier with Relay (Assembled) |                     | Item number:<br>2480-2483  |
| Drawing date:<br>24 May 2022                                    | Dev code:<br>rly01a | <br>© 2022 Pololu Corporation |
| Units: mm [mil]   | Material:<br>mixed  |  |