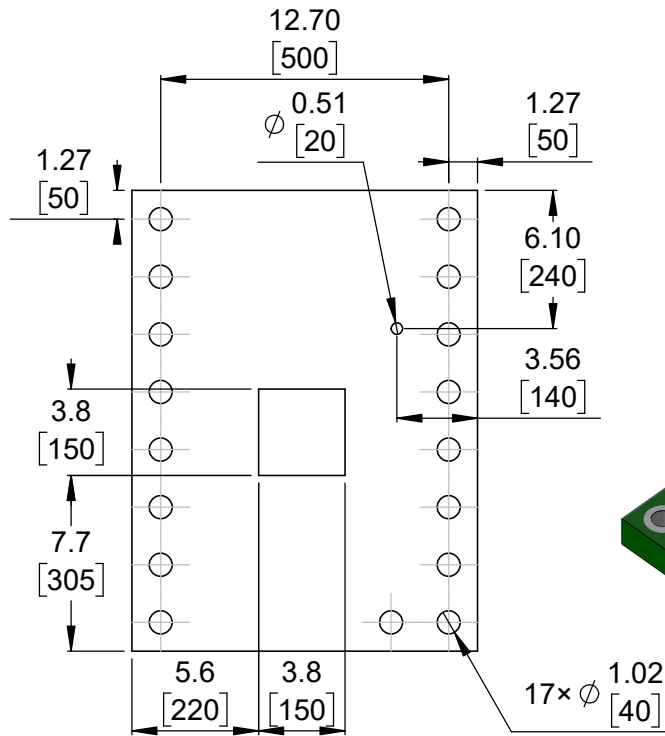
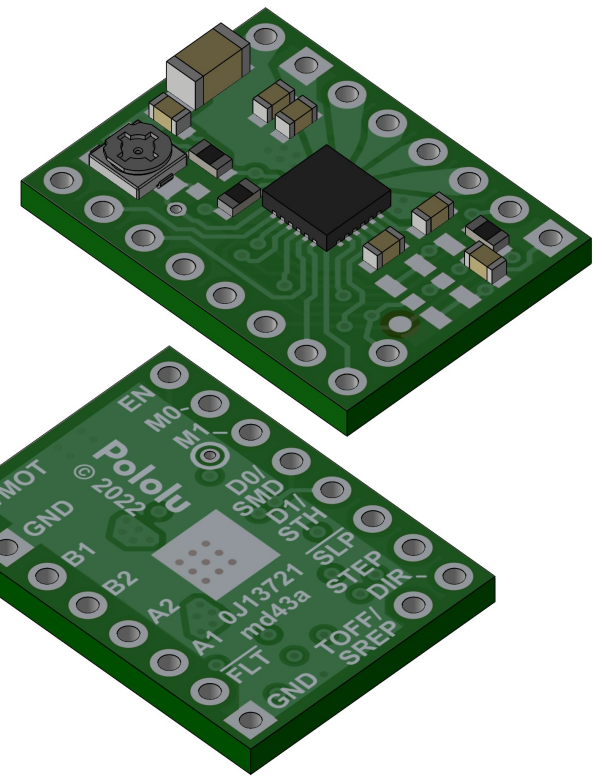


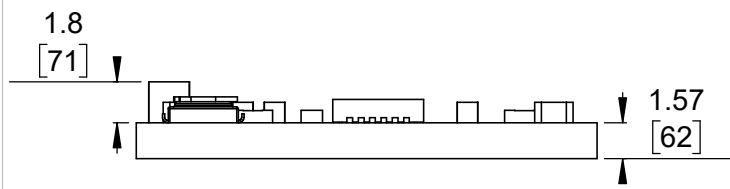
1 Board dimensions (top view)
Scale 3:1



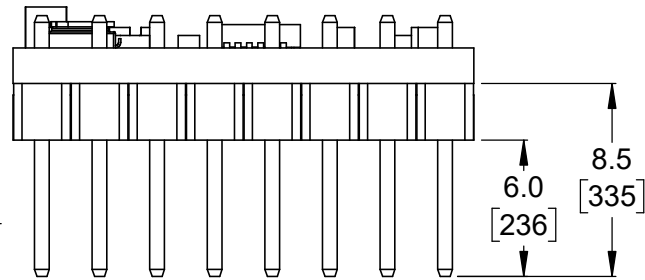
2 Connector callouts (bottom view)
Scale 3:1



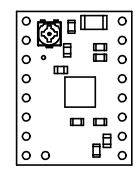
3 Isometric view
Scale 3:1



4 Profile
Scale 3:1



5 Profile with headers
Scale 3:1

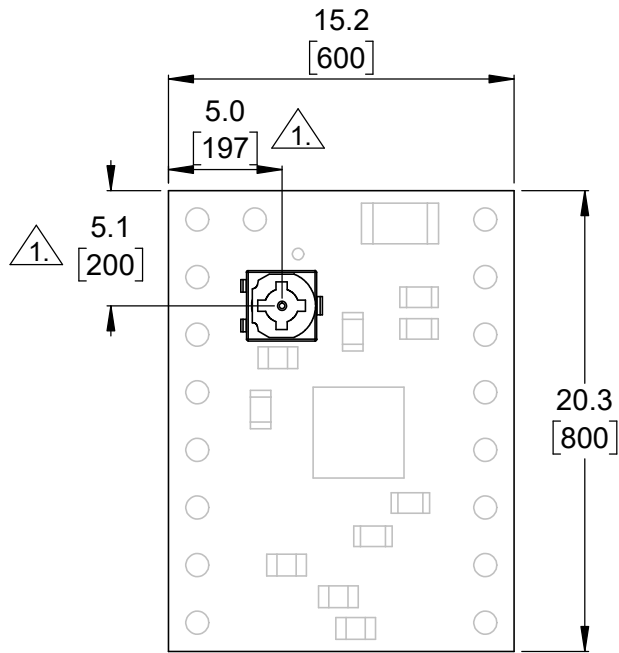


6 Actual size
Scale 1:1

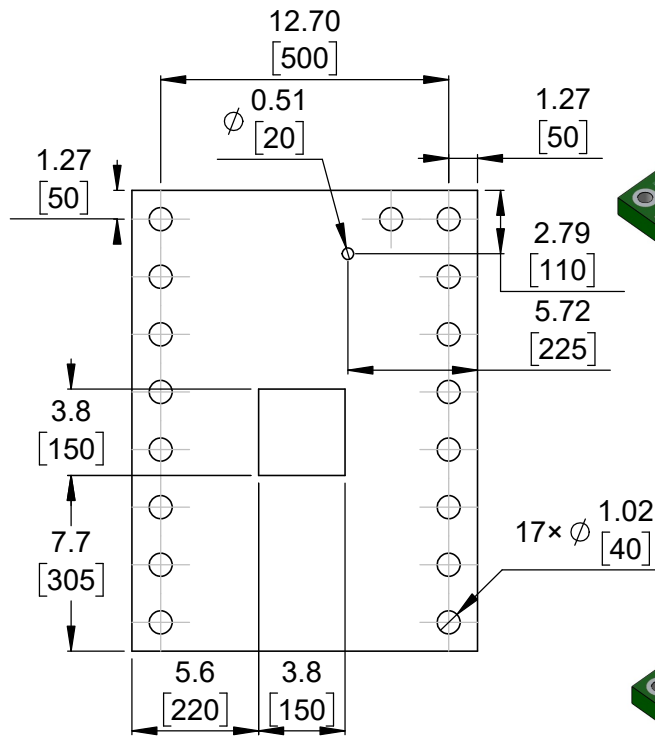
1. Grid lines indicate 2.54 mm [100 mil] spacing.
2. To get the specified scale, select 100% in print settings.
3. Drill location tolerance: ± 0.1 [± 5].
4. Board edge tolerance: ± 0.3 [± 10].

https://www.pololu.com/category/294	
Name: DRV8434/DRV8434A Stepper Motor Driver Carrier	Item number: 3762-3765
Drawing date: 18 September 2023	Dev code: md43a
Units: mm [mil]	Material: mixed

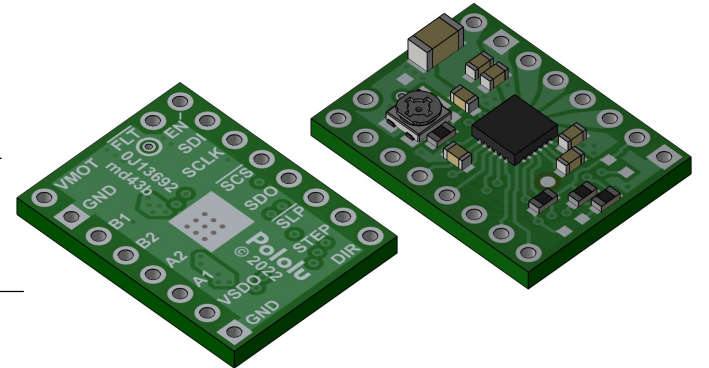




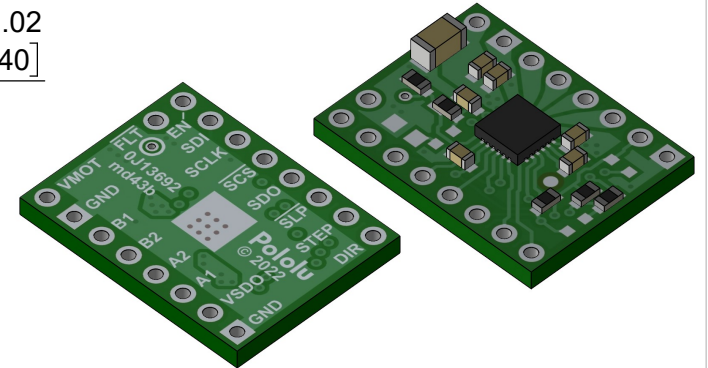
1 Board dimensions (top view)
Scale 3:1



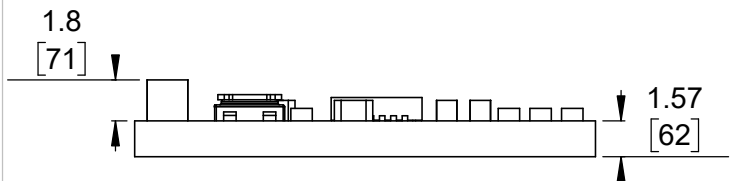
2 Connector callouts (bottom view)
Scale 3:1



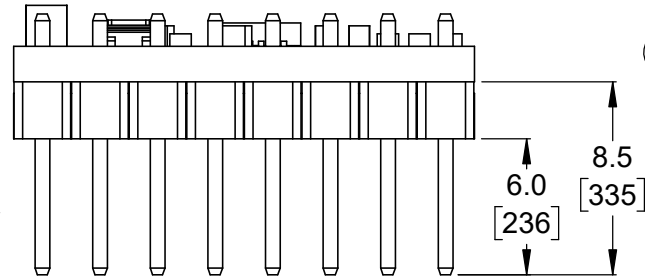
3 Isometric view (potentiometer for max. current limit)
Scale 2:1



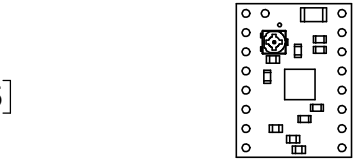
4 Isometric view (2A max. current limit)
Scale 2:1



5 Profile
Scale 3:1



6 Profile with headers
Scale 3:1



7 Actual size
Scale 1:1

- 1. Potentiometer not populated on 2A max. current limit models.
- 2. Grid lines indicate 2.54 mm [100 mil] spacing.
- 3. To get the specified scale, select 100% in print settings.
- 4. Drill location tolerance: ± 0.1 [± 5].
- 5. Board edge tolerance: ± 0.3 [± 10].

https://www.pololu.com/category/294	
Name: DRV8434S SPI Stepper Motor Driver Carrier	Item number: 3766-3769
Drawing date: 18 September 2023	Dev code: md43b
Units: mm [mil]	Material: mixed

