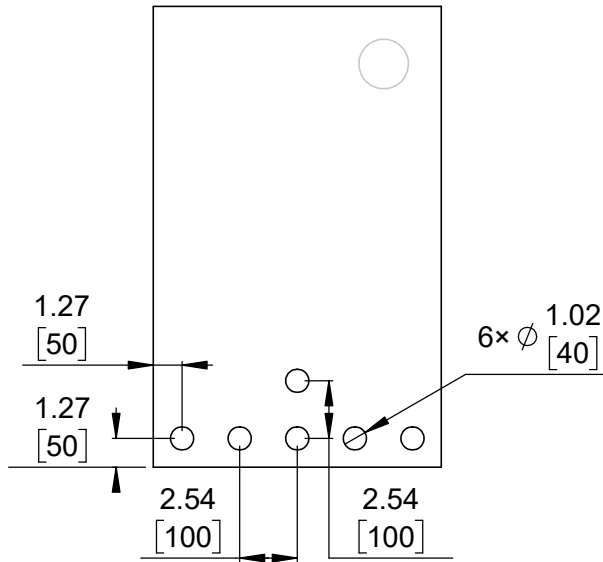
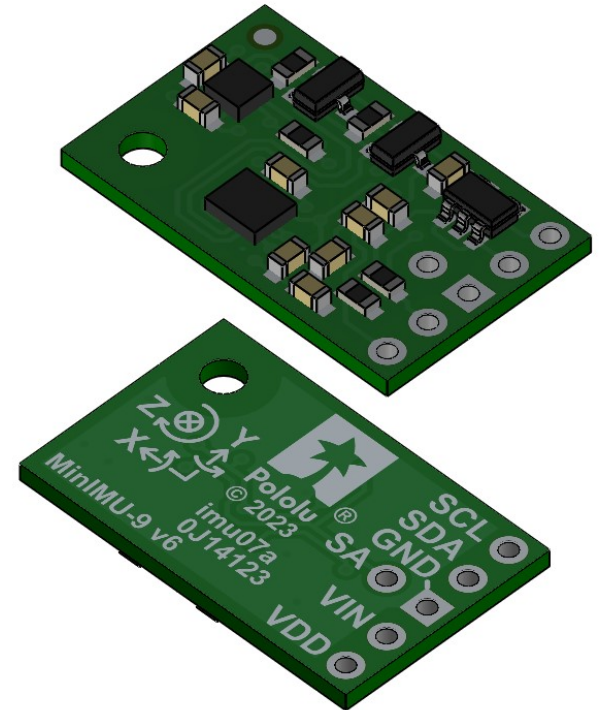


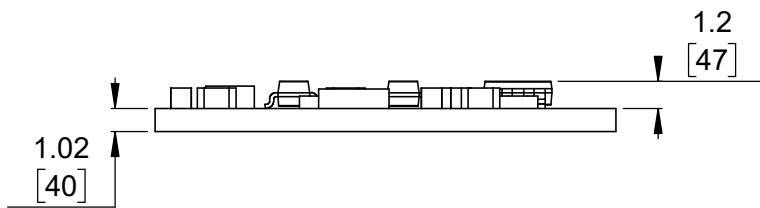
① Board dimensions (top view)
Scale 3:1



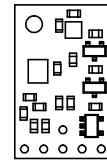
② Connector callouts (bottom view)
Scale 3:1



③ Isometric view
Scale 3:1



④ Profile
Scale 3:1



⑤ Actual size
Scale 1:1

- ①. Intended for M2 or #2 screws.
- ②. To get the specified scale, select 100% in print settings.
- ③. Drill location tolerance: ± 0.1 [± 5].
- ④. Board edge tolerance: ± 0.3 [± 10].

https://www.pololu.com/product/2862	
Name: MinIMU-9 v6 Gyro, Accelerometer, and Compass (LSM6DSO and LIS3MDL Carrier)	Item number: 2862
Drawing date: 30 May 2023	Dev code: imu07a
Units: mm [mil]	Material: mixed

