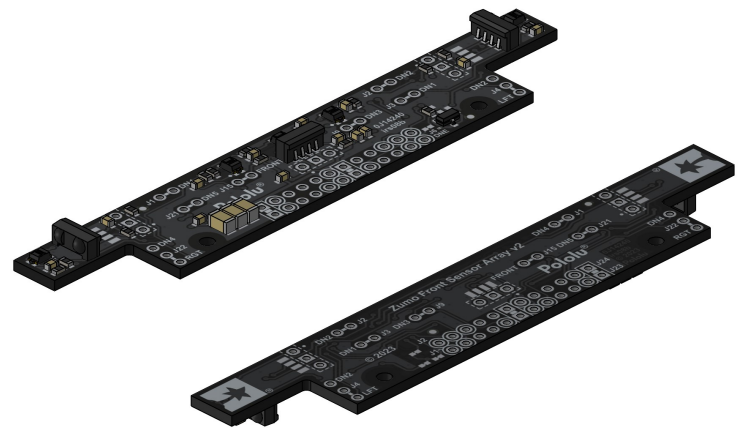
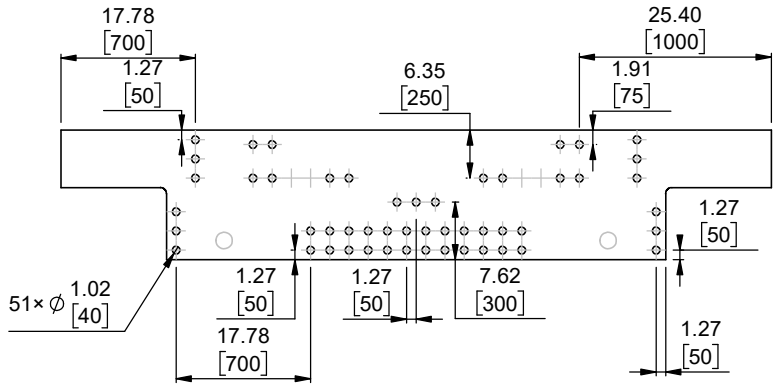


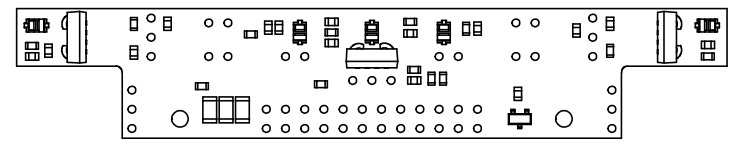
1 Board dimensions (top view)
Scale 1:1



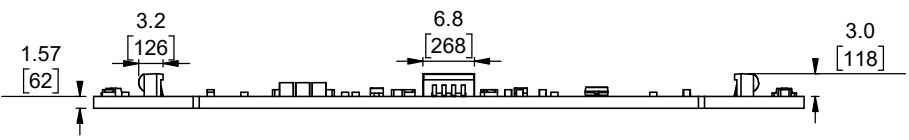
4 Isometric view
Scale 1:1



2 Connector callouts (bottom view)
Scale 1:1



5 Actual size
Scale 1:1



3 Profile
Scale 1:1

- 1. Intended for #2 and M2 screws.
- 2. Grid lines indicate 2.54 mm [100 mil] spacing.
- 3. To get the specified scale, select 100% in print settings.
- 4. Drill location tolerance: ± 0.1 [± 5].
- 5. Board edge tolerance: ± 0.3 [± 10].

https://www.pololu.com/product/5015	
Name: Zumo 2040 Front Sensor Array	Item number: 5015
Drawing date: 21 November 2023	Dev code: irs08b
Units: mm [mil]	Material: mixed

